

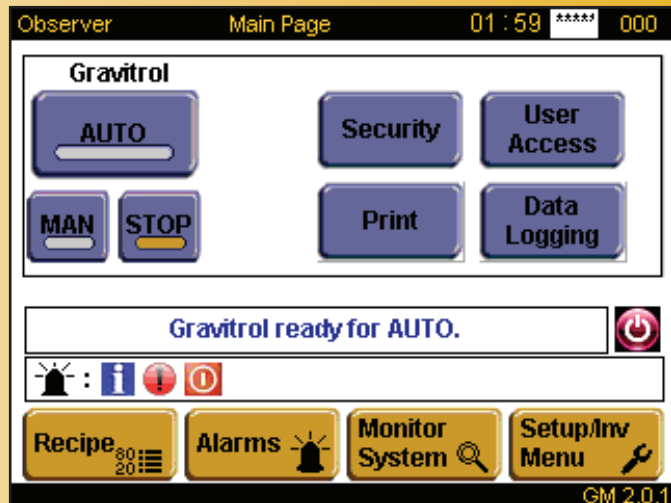
# EXB2 Series GRAVITROL® Operator Station

## Features

Color touchscreen operator interface with off the shelf PLC

Mono or coextrusion monitor of PCC weigh hoppers or X Series 2 Continuous blenders

Integration with customer HMI via Ethernet port



Process Control's Gravitrol Gravimetric Extrusion Control Systems automate the control of any extrusion line - monoextrusion or coextrusion - on the basis of weight. The EXB2 Operator Station is the key component of a complete Gravitrol system.

A standard coextrusion system has multiple HG Series Weigh Hoppers mounted on each extruder to measure the weight throughput. The weigh hopper reports the measurements to the EXB2 Operator Station, and then can control the extruder drives via extruder drive control / line speed control modules (in a separate panel). Based on the weight readings from the weigh hoppers, the EXB2 periodically adjusts the speed of each extruder through the drive control module (one per extruder). Each line speed control module controls a single take-off device for control of line yield (weight per length).

In coextrusion applications with X Series 2 blenders, the EXB2 computer communicates with the blenders' operator stations for integrated monitor and control.

The EXB2 Operator Station functions include coextrusion recipe entry, line operation and monitoring. The station includes a color touchscreen operator interface that insures ease of use and quick startups. Included is a standard Ethernet port for high speed communications integration with remote systems. With an optional control card, communications may be accomplished through either RS422 or RS485 serial links. A number of interface protocols are available, including Modbus, Allen-Bradley DH+, EPCC, ASCII, SPI, and several other formats. Through these remote interfaces, the Gravitrol system can be controlled and monitored from a central location. The EXB2 Operator Station, as part of a complete Gravitrol system, offers flexibility and ease of use with the best possible gravimetric control.

### Options

- B&R PLC based extrusion and line speed control module panel for extrusion control
- Replaces existing EXB Gravitrol Operator Panel for system upgrades
- Serial communications control card
- Special software

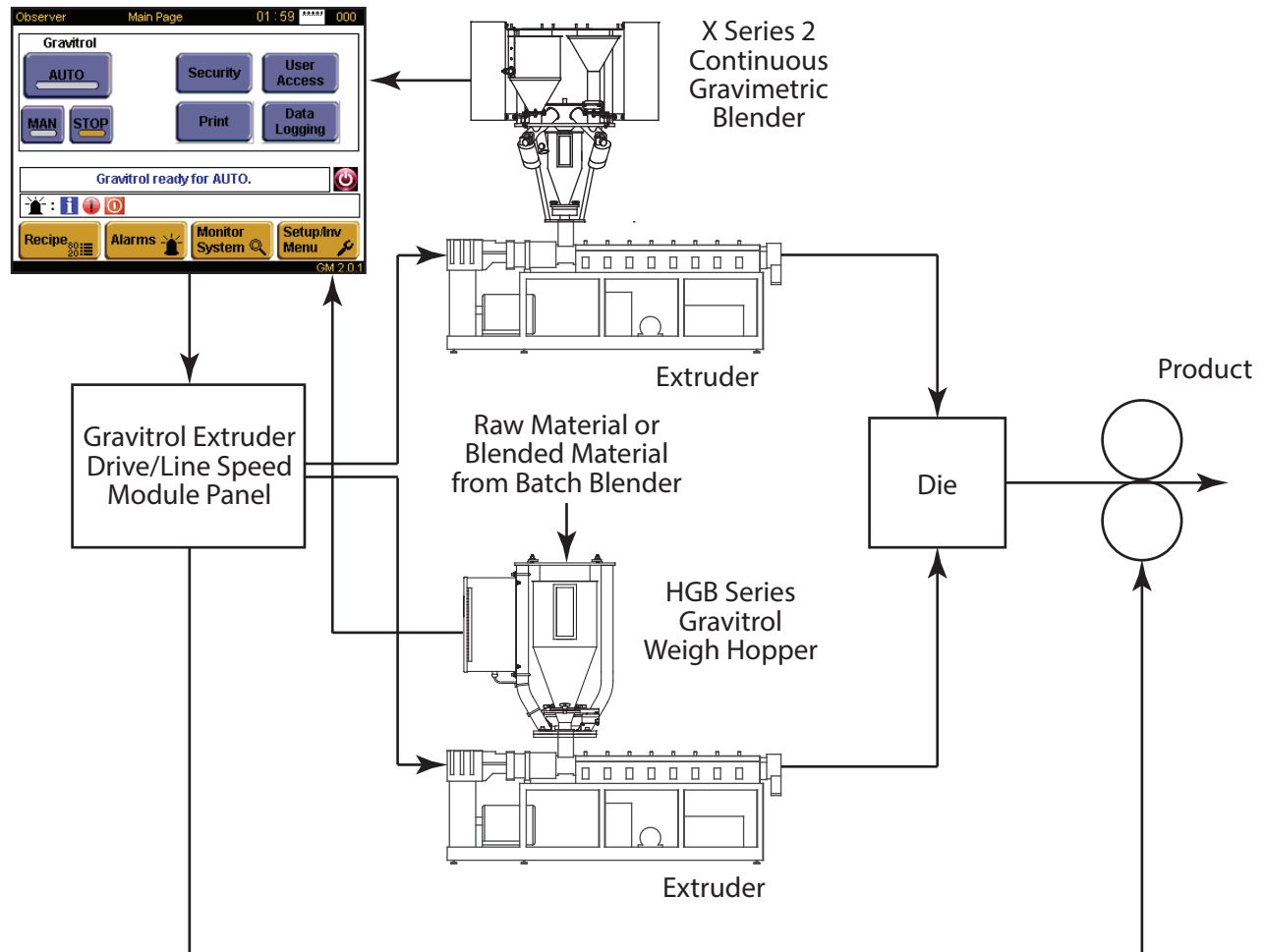


**PROCESS CONTROL CORPORATION**

World Headquarters  
6875 Mimms Drive, Atlanta, GA 30340 USA  
Ph 770.449.8810 Fax 770.449.5445

Process Control GmbH  
Birstein, Germany  
Ph +19-6051-91 29-0 Fax +19-6051-91 29-99

# EXB2 Series Gravitrol® Operator Station



**Depicted above:** a complete Gravitrol system (featuring an EXB2 Operator Station, an HGB Series Weigh Hopper, an X Series 2 Continuous Gravimetric Blender and a multi-extruder drive/line speed module panel controlling a simple coextrusion application). Information is subject to change without notice. Use only certified drawings for construction purposes.

## Specifications for EXB2 Series Gravitrol® Operator Station

Model Number	Power Requirements	Dimensions - Inches (mm)			Shipping Weight lbs (kg)
		Height	Width	Depth	
EXB2AY	115/220/60/1	6.5 (165)	8.5 (216)	2.0 (51)	16 (7)
EXB2AZ	220/50/1				